

# TEAC



Preliminary  
暫定版

## SERVICE MANUAL

# DR-L700

## DVD Receiver



### CONTENTS

1 SPECIFICATIONS .....	2
2 ADJUSTMENTS AND CHECKS .....	3
3 EXPLODED VIEWS AND PARTS LIST .....	6
4 PC BOARDS AND PARTS LIST .....	8
5 INCLUDED ACCESSORIES .....	15

### NOTES

- PC boards shown are viewed from parts side.
- The parts with no reference number or no parts number in the exploded views are not supplied.
- As regards the resistors and capacitors, refer to the circuit diagrams contained in this manual.
- ⚠ Parts marked with this sign are safety critical components. They must be replaced with identical components - refer to the appropriate parts list and ensure exact replacement.
- Parts of [ ] mark can be used only with the version designated.  
[US]:U.S.A. [C]:CANADA [E]:EUROPE [UK]:U.K.



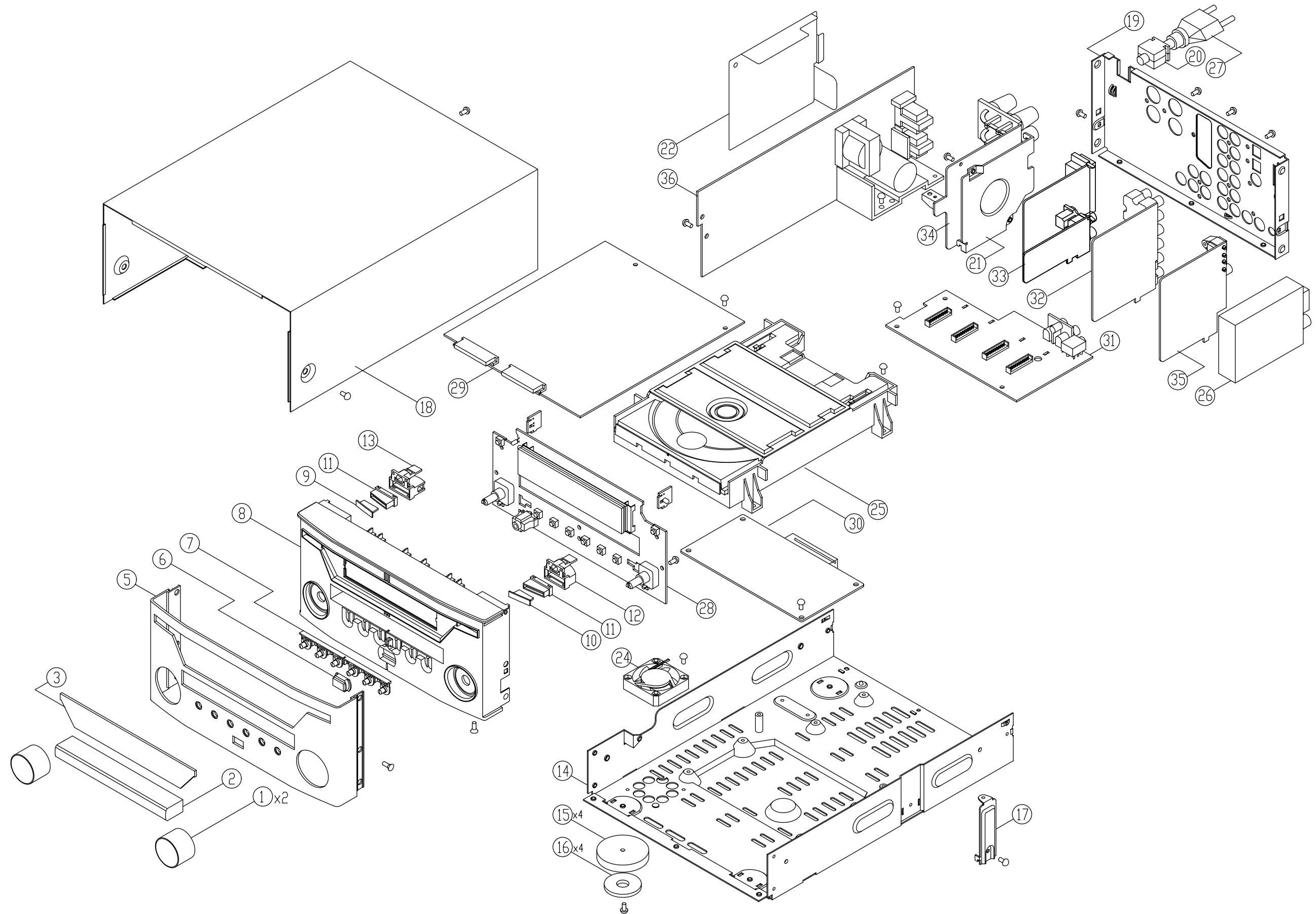
## 2 ADJUSTMENTS AND CHECKS

**Preliminary**  
**準備中**

**Preliminary**  
**準備中**

**Preliminary**  
**準備中**

### 3 EXPLODED VIEWS AND PARTS LIST

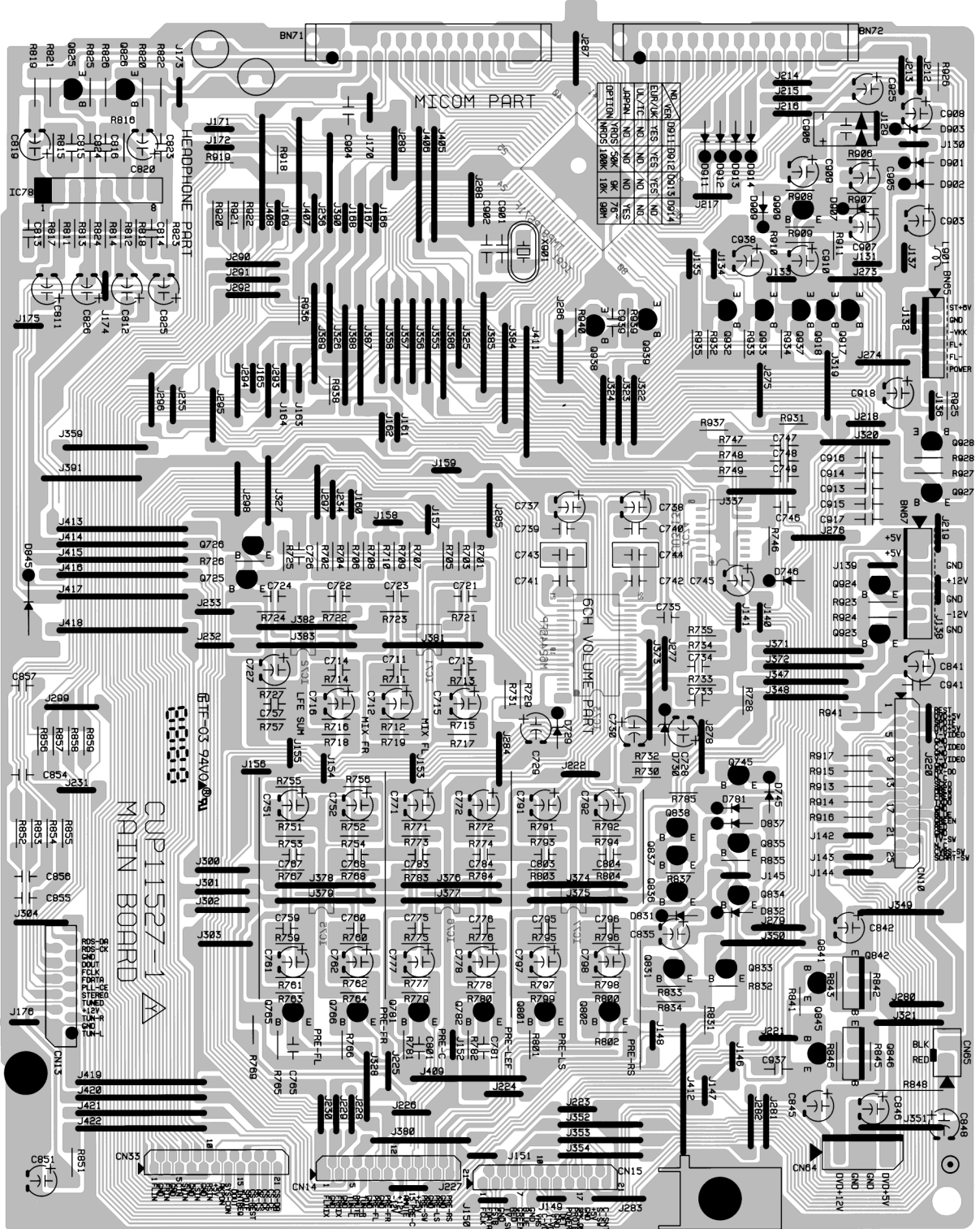


## EXPLODED VIEW LIST

REF. NO.	PARTS NO.	DESCRIPTION	REMARKS
1	9A09616300	VOLUME KNOB ASSY	KGK1A079ZA
2	9A09611000	DOOR, DVD	CGR1A276M7ZK101
3	9A09616400	WINDOW, FIP [US, C]	KGU1A288Y
	9A09615600	WINDOW, FIP [E, UK]	KGU1A288Z
5	9A09616610	PANEL, FRONT (AL) [US, C]	KKM1A124YC35
	9A09616620	PANEL, FRONT (AL) [E, UK]	KKM1A124ZC35
6	9A09594600	WINDOW, SENSOR	CGU1A287A14K101
7	9A09610500	KNOB, BAND	CBT1A839C22
8	9A09611100	PANEL, MOLD	CGW1A343R6K101
9	9A09610400	KNOB, POWER (DIFFUSION)	CBT1A838RAZK101
10	9A09610300	KNOB, RDS (DIFFUSION)	CBT1A838RAYK101
11	9A09610800	KNOB, POWER (LIGHTING)	CBY1A029
12	9A09610600	KNOB, RDS	CBY1A027RA
13	9A09610700	KNOB, POWER	CBY1A028RA
14	9A09612600	CHASSIS, BOTTOM	CUA2A216
15	9A09609400	FOOT	HKL1A074Z
16	9A06229300	CUSHION, FOOT	KHG1A039Z
17	9A09611500	BRACKET, PCB	CMD1A395
18	9A09607700	TOP CABINET	CKC1B131S35
19	9A09611410	REAR PANEL [US, C]	CKF2A238X
	9A09611420	REAR PANEL [E, UK]	CKF1A238Z
20	△ 9A06754900	BUSHING, AC CORD	KHR1A028
21	9A09608200	PLATE, HEAT SINK	CMY1A200
22	9A09611700	INSULATOR, SMPS	CMX2A133
24	9A09601800	FAN, MOTOR	HDMF410T12L1C01
25	9A09613700	1 DVD MECHANISM (HD3 P/U)	HJDRL-A700HD3
26	9A09611810	TUNER MODULE [US, C]	CNVMV001MA0-17
	9A09611820	TUNER MODULE [E, UK]	CNVMV114MA1-17
27	△ 9A07872600	POWER CORD [US, C]	CJA523FBY
	△ 9A07916700	POWER CORD [E]	CJA2B043Z
	△ 9A07916800	POWER CORD [UK]	CJA2E045Z
28, 29	9A09578910	MAIN PCB ASSY [US, C]	COP11527C
	9A09578920	MAIN PCB ASSY [E, UK]	COP11527B
30	-----	DVD MAIN PCB ASSY [US, C]	
	-----	DVD MAIN PCB ASSY [E, UK]	
31, 32, 33	9A09578910	MAIN PCB ASSY [US, C]	COP11527C
	9A09578920	MAIN PCB ASSY [E, UK]	COP11527B
34, 35	9A09578510	AMP PCB ASSY	COP11526B
36	9A09611910	SMPS PCB ASSY [US, C]	COPDDS115B
	9A09611920	SMPS PCB ASSY [E, UK]	COPDDS115A
	9A09612900	CARD CABLE	CWC1B4A21A100B6
	9A09613000	CARD CABLE	CWC1C4A13B080B
	9A09613100	CARD CABLE (SHIELD)	CWC3B2A25A150B6
	9A09607900	FERRITE, RING	CLZ9W003Z

# 4 PC BOARDS AND PARTS LIST

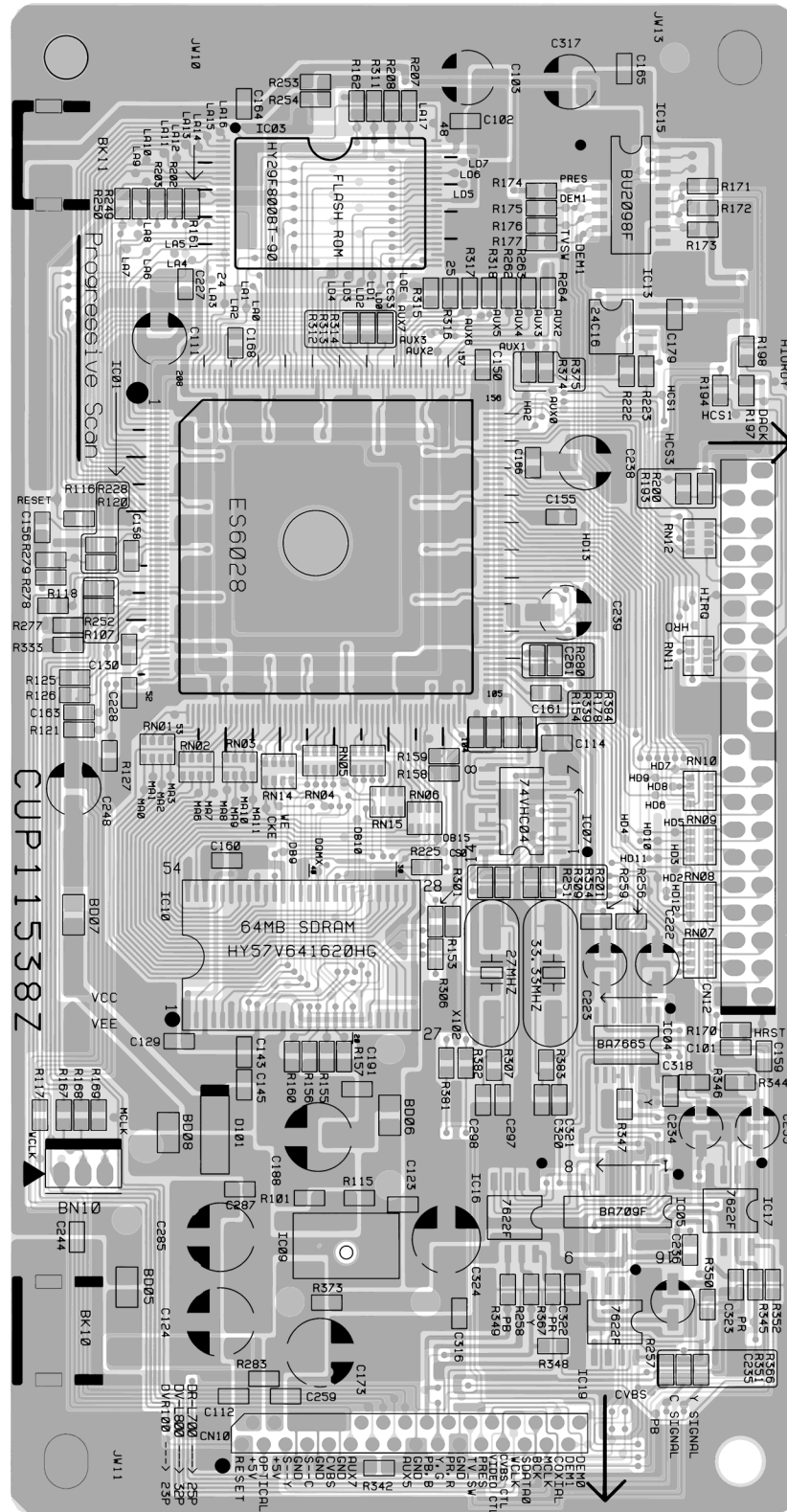
## MAIN PCB (MAIN GATHER)





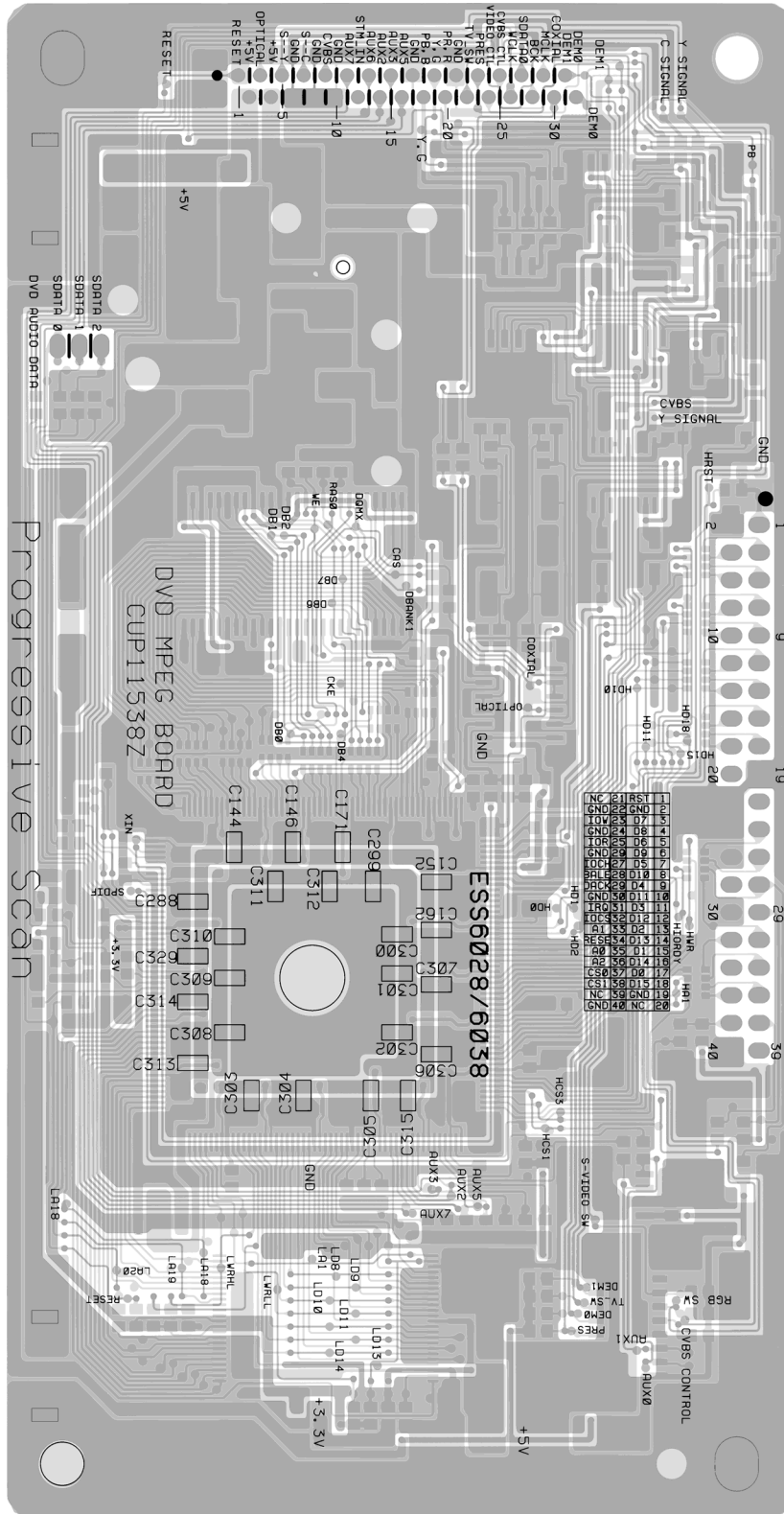


DVD MAIN PCB (SIDE A)



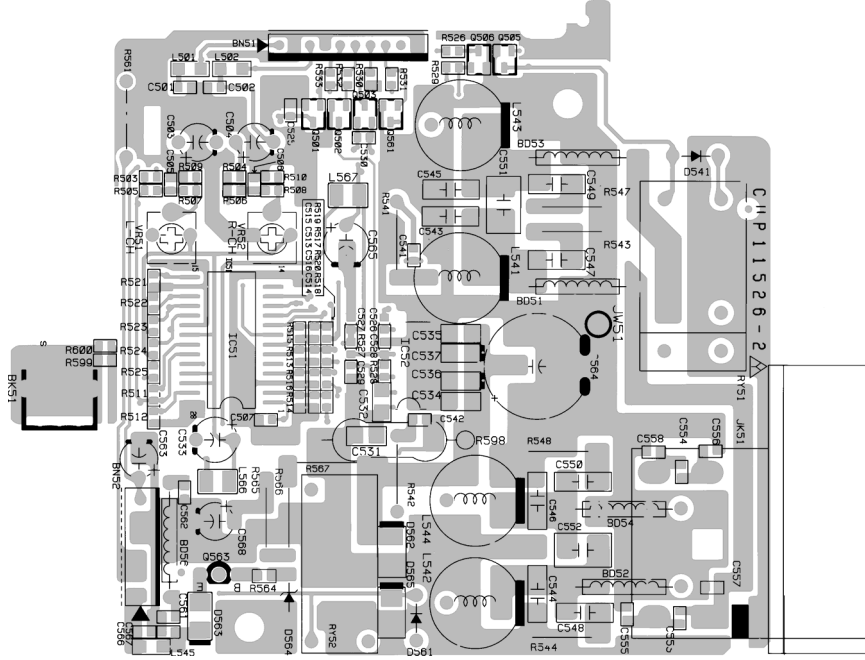
(About 150%)

DVD MAIN PCB (SIDE B)

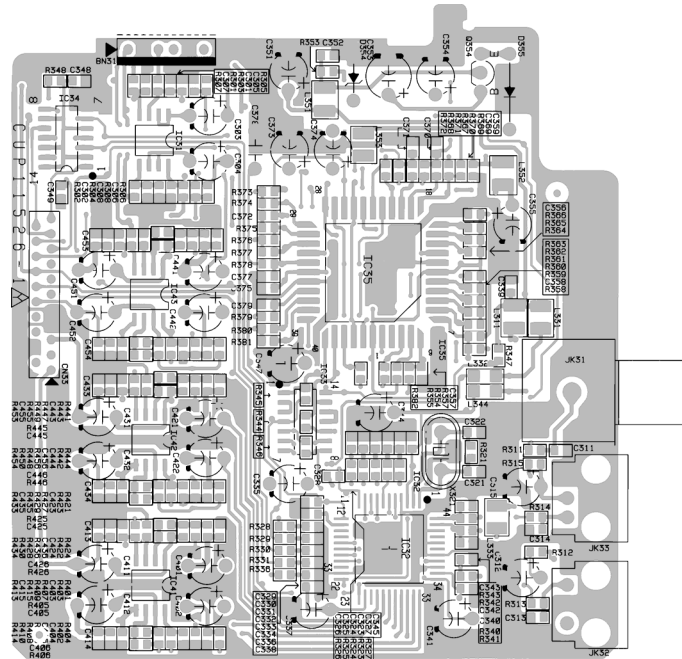


(About 150%)

### AMP PCB (AMP GATHER)



### DSP PCB (AMP GATHER)



## MAIN PCB ASSY (GATHER)

REF. NO.	PARTS NO.	DESCRIPTION
	9A09578910	MAIN PCB ASSY [US, C]
	9A09578920	MAIN PCB ASSY [E, UK]
	9A09579100	MAIN PCB
	9A09608000	PLATE, EARTH
BK91, BK92	9A08877300	BRACKET, FLT
BN11	9A09606200	WAFER
BN21	9A08036700	WAFER [US, C]
BN21	9A09606200	WAFER [E, UK]
BN71, BN72	9A09285800	FLEXIBLE CONNECTOR (SOCKET)
C906	9A09275000	C, 0.1F GOLD
CN10	9A09616500	WAFER, CARD CABLE
CN11	9A09606100	WAFER
CN13	9A09279500	WAFER, CARD CABLE
CN14, CN15	9A08789600	WAFER, CARD CABLE
CN21	9A08036600	WAFER, MOLEX 35336-1010 [US, C]
CN21	9A09606100	WAFER [E, UK]
CN31	9A07889700	WAFER, MOLEX 35336-0610
CN33	9A08789600	WAFER, CARD CABLE
CN51	9A08036600	WAFER, MOLEX 35336-1010
CN64	9A05329300	WAFER, MOLEX 5267-04A
CN65	9A08219500	WAFER
CN71, CN72	9A09285700	FLEXIBLE CONNECTOR (PLUG)
D729, D730	9A07903000	DIODE, ZENER MTZJ7.5A
D745, D746	9A08878200	DIODE, 1SS133T-77
D781	9A08878200	DIODE, 1SS133T-77
D831, D832	9A08878200	DIODE, 1SS133T-77
D837	9A08878200	DIODE, 1SS133T-77
D901, D902	9A05194600	DIODE, 1N4003SRT
D903	9A08878200	DIODE, 1SS133T-77
D907, D909	9A08878200	DIODE, 1SS133T-77
D911-D913	9A08878200	DIODE, 1SS133T-77 [E, UK]
D955, D956	9A09563300	LED, BLUE
D958	9A09344400	LED, YELLOW
FIP1	9A09571000	F. I. P
IC11	9A09340400	IC, TC9164AF
IC12	9A08163400	IC, NJM2068MD
IC21	9A09614800	IC, BA7609F [E, UK]
IC71, IC72	9A08163400	IC, NJM2068MD
IC73	9A09604000	IC, M62446AFP
IC74	9A09604100	IC, NJU3713G
IC75-IC77	9A08163400	IC, NJM2068MD
IC78	9A08163500	IC, NJM4556AL
IC91	9A09556200	IC, HV1ANAM1351DAT (PRGMD)
JK11, JK12	9A09559000	JACK, BOARD
JK13	9A06230200	JACK, REMOTE 2P
JK14	9A06861800	JACK, HEADPHONE
JK21	9A09278800	JACK, S-VIDEO+VHS [E, UK]
JK22	9A09256100	JACK, IN/OUT [E, UK]
JK23	9A08152300	SCART CONNECTOR [E, UK]
JK27	9A09278800	JACK, S-VIDEO+VHS [US, C]

## MAIN PCB ASSY (GATHER)

REF. NO.	PARTS NO.	DESCRIPTION
JK28	9A09256100	JACK, IN/OUT [US, C]
JK91	9A08126400	JACK, HEADPHONE (SILVER)
L201-L209	9A09613900	COIL, 1.8UH [E, UK]
L271-L273	9A09613900	COIL, 1.8UH [US, C]
L281-L283	9A09613900	COIL, 1.8UH [US, C]
L901	9A07886600	COIL, 10UH
Q165, Q166	9A09616000	TR, KTC2874BT
Q167	9A09604700	TR, KRA102MT
Q241-Q245	9A01387400	TR, KSA733CYT [E, UK]
Q246	9A09604900	TR, KRC102MT [E, UK]
Q247	9A09604700	TR, KRA102MT [E, UK]
Q248	9A09604900	TR, KRC102MT [E, UK]
Q255	9A09604900	TR, KRC102MT [E, UK]
Q725	9A09616000	TR, KTC2874BT
Q726	9A09604700	TR, KRA102MT
Q745	9A09604700	TR, KRA102MT
Q765, Q766	9A09616000	TR, KTC2874BT
Q781, Q782	9A09616000	TR, KTC2874BT
Q801, Q802	9A09616000	TR, KTC2874BT
Q825, Q826	9A09616000	TR, KTC2874BT
Q831	9A07888000	TR, KSC2316YT
Q833, Q834	9A09604900	TR, KRC102MT
Q835, Q836	9A09604700	TR, KRA102MT
Q837, Q838	9A09604900	TR, KRC102MT
Q841	9A03745000	TR, KSC2785YTA
Q842	9A09615900	TR, KSB1151Y
Q845	9A09604900	TR, KRC102MT
Q846	9A09615900	TR, KSB1151Y
Q909	9A07887900	TR, KSB811YT
Q917	9A09604700	TR, KRA102MT
Q918	9A09604900	TR, KRC102MT
Q923	9A07888000	TR, KSC2316YT
Q924	9A09604700	TR, KRA102MT
Q927	9A09604700	TR, KRA102MT
Q928	9A07898600	TR, KSD1021YT
Q932, Q933	9A09604900	TR, KRC102MT
Q937	9A09604900	TR, KRC102MT
Q938	9A09604700	TR, KRA102MT
Q939	9A09604900	TR, KRC102MT
Q953	9A09604700	TR, KRA102MT
Q954, Q955	9A09604900	TR, KRC102MT
Q957, Q958	9A09604900	TR, KRC102MT
RC91	9A08563600	SENSOR, REMOCON
S971-S978	9A07878500	SW, TACT SKHV10910G
VR91	9A09339900	VR, ENCODER
VR92	9A09614600	VR, ENCODER
X901	9A08879000	CRYSTAL

**DVD MAIN PCB ASSY**

REF. NO.	PARTS NO.	DESCRIPTION
	-----	DVD MAIN PCB ASSY [E, UK]
	9A09578400	DVD MAIN PCB
CN10	9A09616500	WAFER, CARD CABLE
CN12	9A09256400	40P HEADER
D101	9A09614700	DIODE, SCHOTTKEY BARRIER
IC01	9A09615200	IC, ES6028F
IC03	9A09615300	IC, FLASH MEMORY
IC05	9A09614800	IC, BA7609F
IC07	9A09615800	IC, 74VHC04MX
IC09	△ 9A09615500	IC, RC1117ST
IC10	9A09615400	IC, 64M SDRAM
IC13	9A09615000	IC, EEPROM (16K)
IC15	9A09615100	IC, BU2098F
IC16	9A09614900	IC, BA7622F
IC19	9A09614900	IC, BA7622F
RN01-RN12	9A09614500	R, ARRAY 33X4
RN14, RN15	9A09614500	R, ARRAY 33X4
X102	9A09614200	CRYSTAL, CHIP 27MHZ

**AMP PCB ASSY (GATHER)**

REF. NO.	PARTS NO.	DESCRIPTION
	9A09578510	AMP PCB ASSY
	9A09578800	AMP & DSP PCB
	9A09608200	PLATE, HEAT SINK
BD51-BD54	9A07050600	BEAD, CORE
BD56	9A07050600	BEAD, CORE
BK51	9A09559700	BRACKET, PCB
BN31	9A07889800	CONNECTOR, MOLEX 35237-0610
BN51	9A08036700	WAFER
CN33	9A08789600	WAFER, CARD CABLE 21P
D354	9A09603500	DIODE, ZENER MTZJ4.3CT
D355	9A05194700	DIODE, 1N4003ST
D541	9A08878200	DIODE, 1SS133T-77
D561	9A08878200	DIODE, 1SS133T-77
D562, D563	9A09614700	DIODE, SCHOTTKEY BARRIER
D564	9A07898400	DIODE, ZENER MTZJ5.6BT
D565	9A09614700	DIODE, SCHOTTKEY BARRIER
IC31	9A08163400	IC, NJM2068MD
IC32	9A09603700	IC, AK4586VQ
IC34	9A09615700	IC, 74LCX08MX
IC35	9A09603900	IC, CS493264-CL
IC41-IC43	9A08163400	IC, NJM2068MD
IC51	9A09570400	IC, TC2000
IC52	△ 9A09570600	IC, TP2050
JK31	9A09558800	JACK, INPUT 1P (GOLD)
JK32	9A09613800	MODULE, OPTICAL (RECEIVE)
JK33	9A08126500	MODULE, OPTICAL
JK51	9A09559100	TERMINAL, SPEAKER
L311	9A09614000	COIL, CHIP 22UH K
L331	9A09614000	COIL, CHIP 22UH K
L332	9A09602000	BEAD, FERRITE (CHIP)

**AMP PCB ASSY (GATHER)**

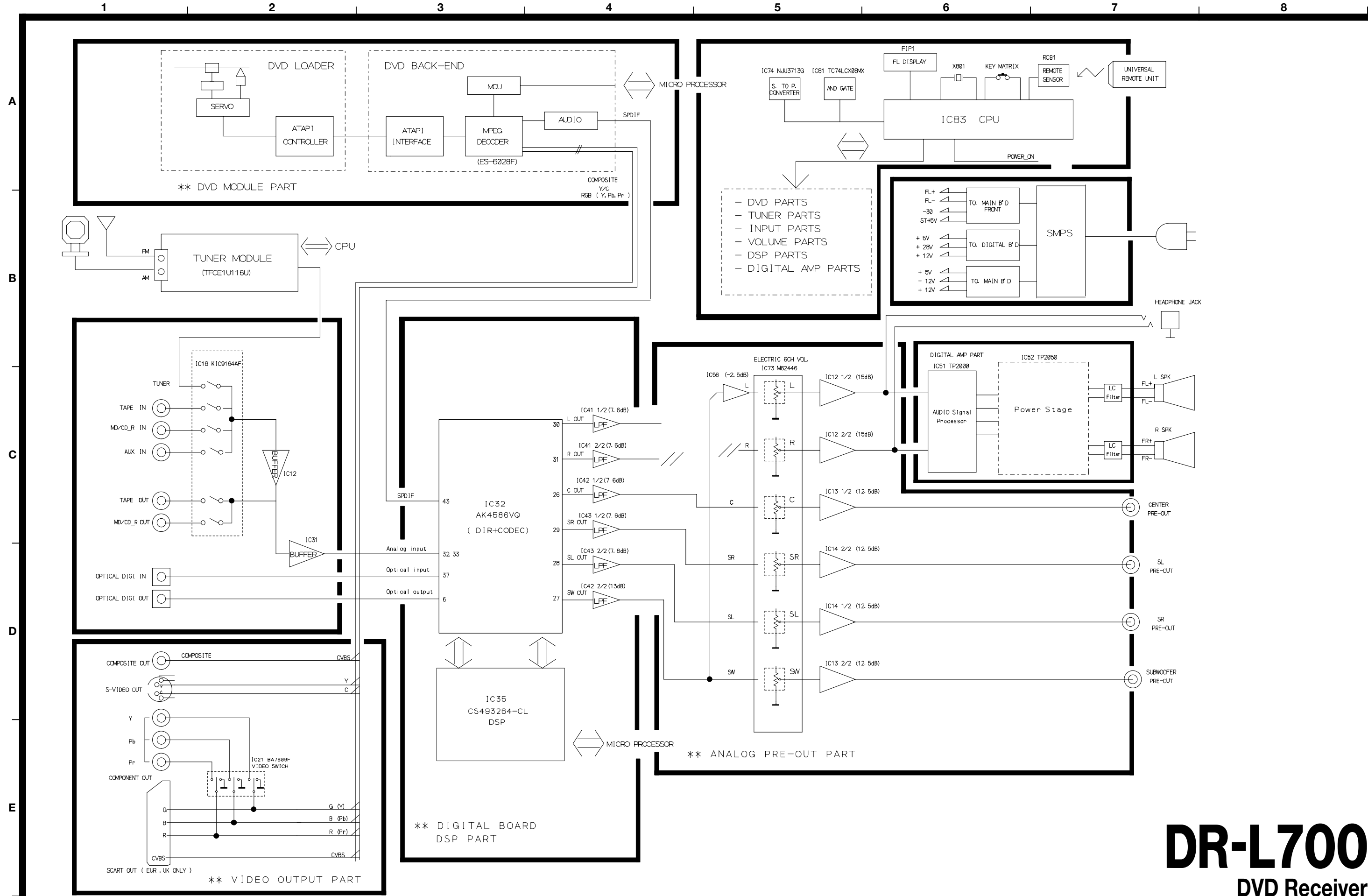
REF. NO.	PARTS NO.	DESCRIPTION
L333	9A09614000	COIL, CHIP 22UH K
L344	9A09602000	BEAD, FERRITE (CHIP)
L351-L353	9A09614000	COIL, CHIP 22UH K
L501, L502	9A09602000	BEAD, FERRITE (CHIP)
L541-L544	9A09559500	COIL, SPEAKER
L545	9A09602000	BEAD, FERRITE (CHIP)
L566, L567	9A09614000	COIL, CHIP 22UH K
Q354	△ 9A07888000	TR, KSC2316YT
Q501, Q502	9A09605000	TR, CHIP KRC102S
Q503	9A09604800	TR, CHIP KRA102S
Q505, Q506	9A09605000	TR, CHIP KRC102S
Q561	9A09605000	TR, CHIP KRC102S
Q563	△ 9A07888000	TR, KSC2316YT
R541, R542	9A09571600	R, METAL FILM
R598	△ 9A09571700	R, METAL OXIDE FILM 2W 1K
RY51	9A09058500	RELAY
RY52	9A09569900	RELAY
VR51, VR52	9A09570700	VR, SEMI FIXED 4.7K OHM
X321	9A09614100	CRYSTAL

## 5 INCLUDED ACCESSORIES

### INCLUDED ACCESSORIES

REF. NO.	PARTS NO.	DESCRIPTION	REMARKS
	9A09478400	OWNER'S MANUAL, EFS [US, C]	CQX1A794Z
	9A09478600	OWNER'S MANUAL, GIN [E]	CQX1A791Y
	9A09478500	OWNER'S MANUAL, EFS [E, UK]	CQX1A791Z
	9A09610200	REMOCON ASSY [US, C]	CARTDRL700TC
	9A09610220	REMOCON ASSY [E, UK]	CARTDRL700EUR
	9A09055200	BATTERY	HABAAM1.5V
	9A09562000	FM 1 POLE ANT [US, C]	CSA1A019Z
	9A09572700	FM 1 POLE ANT [E, UK]	CSA1A018Z
	9A09562100	AM LOOP ANT	CSA1A020Z
	9A09611300	PIN CORD, 1P	CJS4M023Z

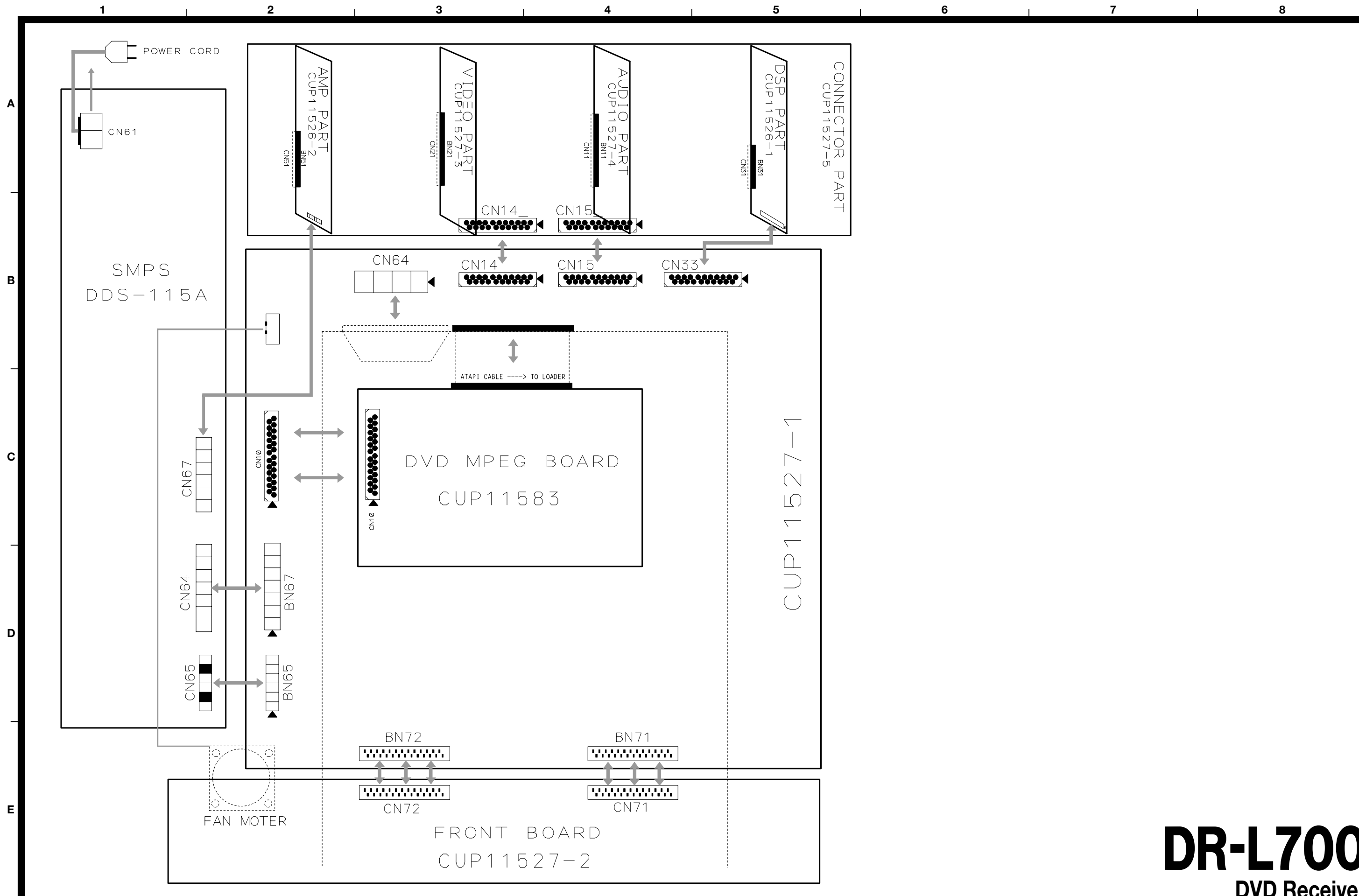
# TEAC BLOCK DIAGRAM DR-L700



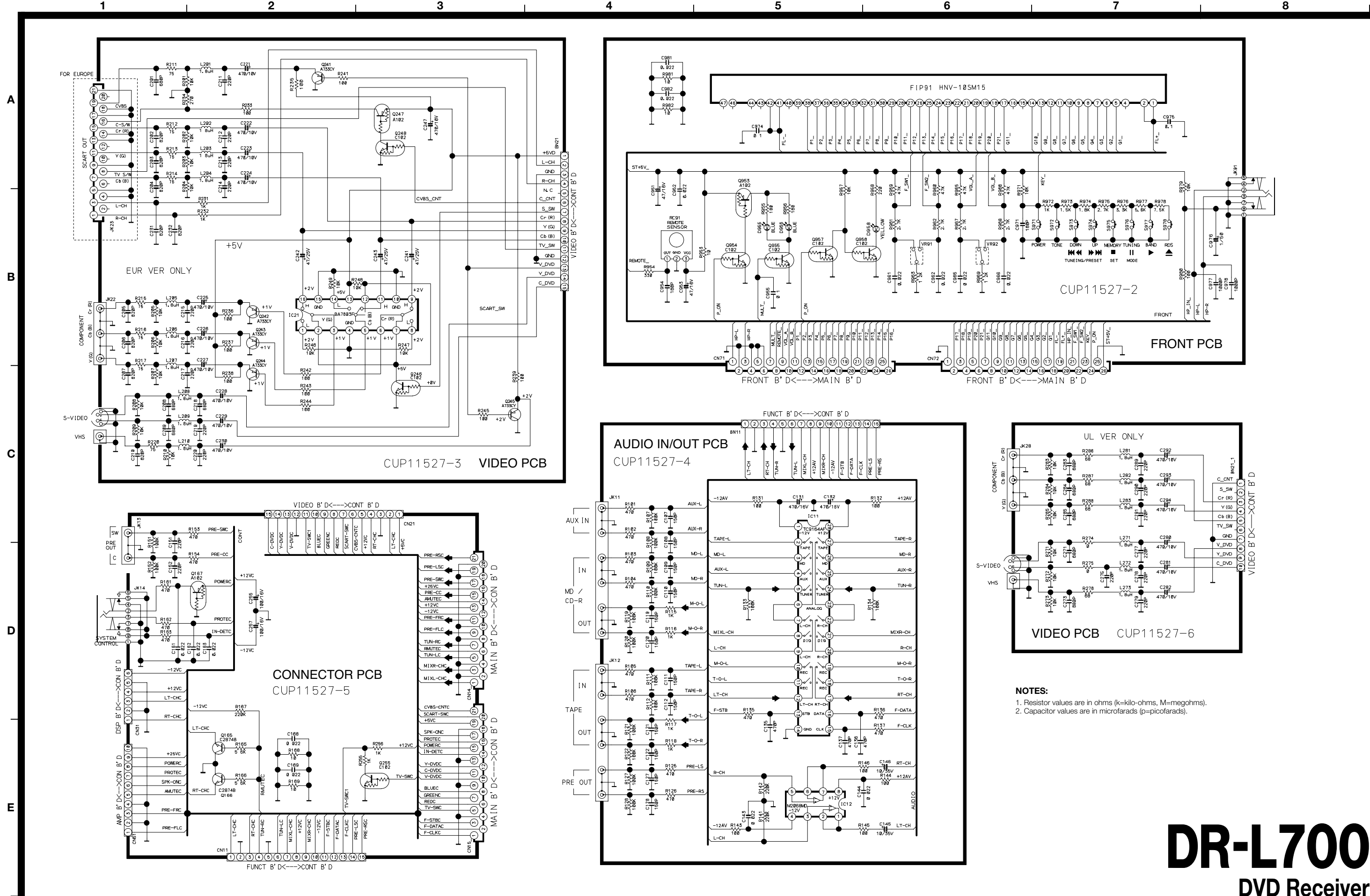
**DR-L700**  
**DVD Receiver**  
 1st Issue; November 2002



# TEAC WIRING DIAGRAM DR-L700



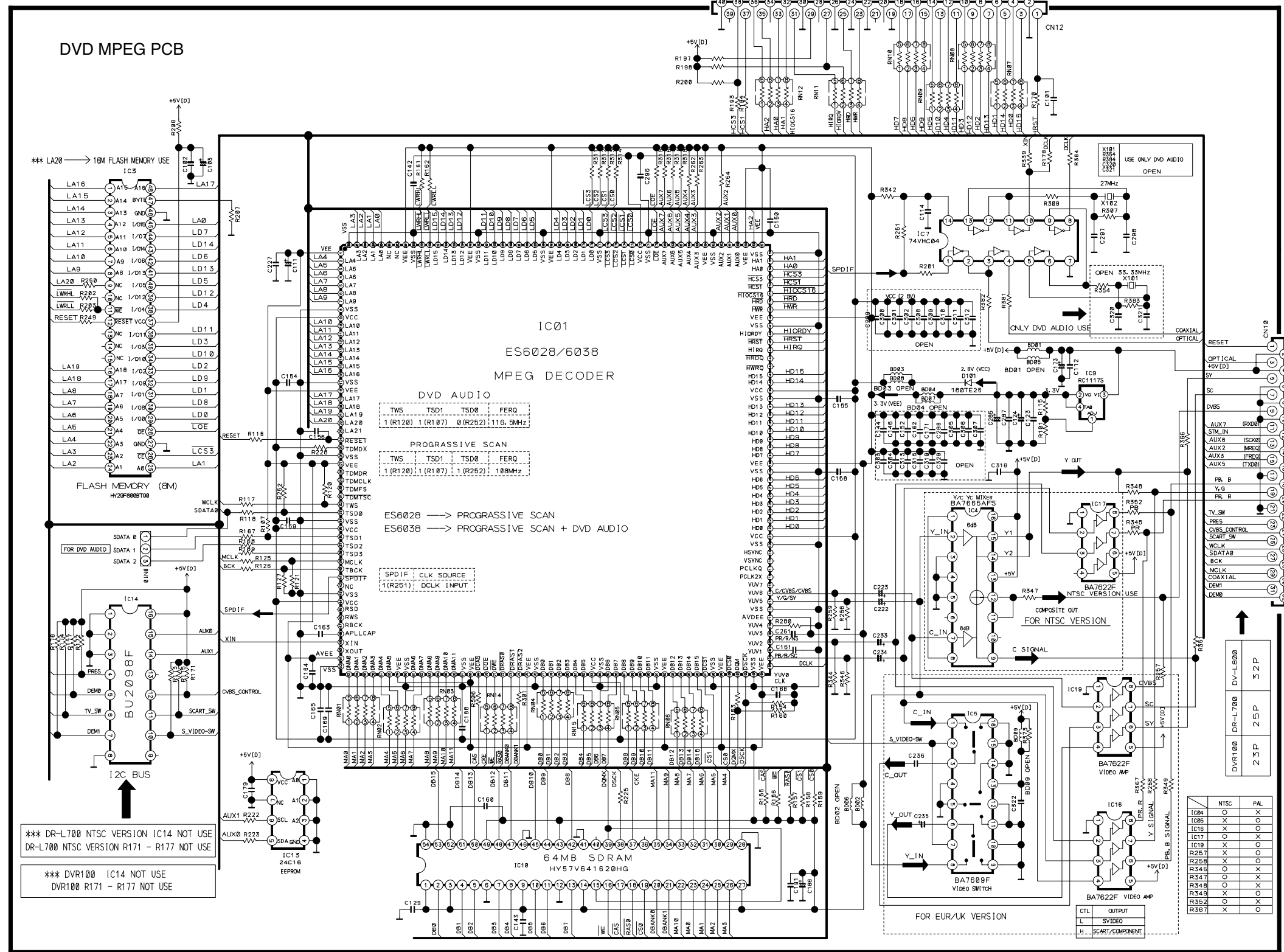
# TEAC SCHEMATIC DIAGRAM DR-L700 VIDEO PCB, FRONT PCB, CONNECTOR PCB, AUDIO IN/OUT PCB



**NOTES:**  
 1. Resistor values are in ohms (k=kilo-ohms, M=megohms).  
 2. Capacitor values are in microfarads (μ=picofarads).

1 2 3 4 5 6 7 8

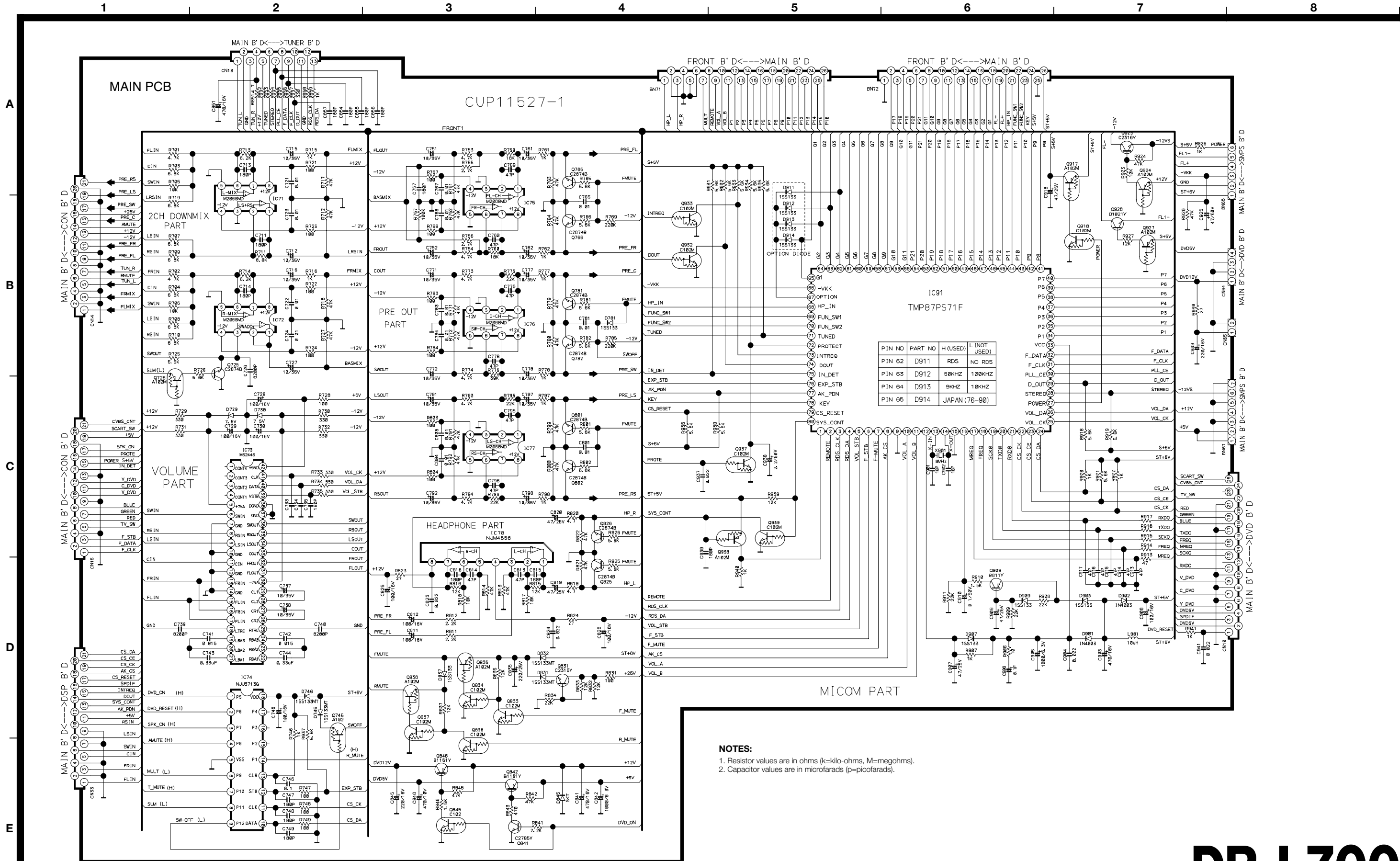
A  
B  
C  
D  
E



R101	360	R263	NS	C185	
R102	NS	R301	33	C165	0.1
R103	NS	R306	33	C166	0.1
R104	NS	R307	100K	C168	0.1
R105	NS	R309	330	C173	0.1
R106	NS	R311	4.7K	C179	0.1
R107	4.7K	R312	4.7K	C188	100/6.3
R108	NS	R313	4.7K	C191	NS
R109	NS	R314	4.7K	C222	10/50
R110	NS	R315	4.7K	C223	10/50
R111	NS	R316	4.7K	C228	0.1
R112	NS	R317	4.7K	C235	10/50
R113	NS	R318	4.7K	C234	10/50
R114	NS	R320	NS	C235	10/50
R115	220	R321	NS	C236	0.1
R116	1K	R322	NS	C237	0.1
R117	10	R323	NS	C248	47/6.3
R118	10	R339	120	C261	0.1
R119	NS	R344	68	C285	100/6.3
R120	4.7K	R345	75	C286	NS
R121	47K	R346	68	C287	0.1
R122	NS	R347	75	C296	0.1
R123	NS	R348	75	C297	27P
R124	NS	R349	0	C298	27P
R125	10	R351	82	C316	0.1
R126	10	R352	75	C317	47/6.3
R127	47K	R354	330	C318	0.1
R133	33	R366	75	C320	NS
R154	47K	R367	0	C321	NS
R155	4.7K	R373	0	C322	0.1
R156	4.7K	R374	4.7K	C323	0.1
R157	4.7K	R375	4.7K	C324	100/6.3
R158	4.7K	R381	33	D101	160T/25
R159	4.7K	R382	33	BD01	NS
R160	47K	RN01	3304	BD02	NS
R161	4.7K	RN02	3304	BD03	NS
R162	4.7K	RN03	3304	BD04	NS
R170	33	RN04	3304	BD05	0
R171	10K	RN05	3304	BD06	0
R172	1K	RN06	3304	BD07	0
R173	10K	RN07	3304	BD08	0
R174	10K	RN08	3304	BD09	NS
R175	10K	RN09	3304		
R176	10K	RN10	3304		
R177	10K	RN11	3304		
R178	120	RN12	3304		
R193	33	RN13	3304		
R194	33	RN15	3304		
R197	4.7K	C101	0.1		
R198	4.7K	C102	0.1		
R200	4.7K	C103	47/6.3		
R201	33	C105	47/6.3		
R203	10	C111	47/6.3		
R207	NS	C112	0.1		
R222	100	C114	0.1		
R223	100	C123	0.1		
R225	100	C124	100/6.3		
R228	4.7K	C129	0.1		
R249	1K	C130	0.1		
R251	4.7K	C145	0.1		
R252	75	C145	0.1		
R256	68	C150	0.1		
R257	0	C152	0.1		
R258	0	C155	0.1		
R259	68	C155	0.1		
R262	4.7K	C158	0.1		
R263	4.7K	C160	0.1		
R264	4.7K	C161	0.1		
R278	NS	C163	150p		
R280	270	C164	0.1		

**NOTES:**  
 1. Resistor values are in ohms (k=kilo-ohms, M=megohms).  
 2. Capacitor values are in microfarads (p=picofarads).

# TEAC SCHEMATIC DIAGRAM DR-L700 MAIN PCB



**NOTES:**  
 1. Resistor values are in ohms (k=kilo-ohms, M=megohms).  
 2. Capacitor values are in microfarads (p=picofarads).

# TEAC SCHEMATIC DIAGRAM DR-L700 DSP PCB, AMP PCB

1 2 3 4 5 6 7 8

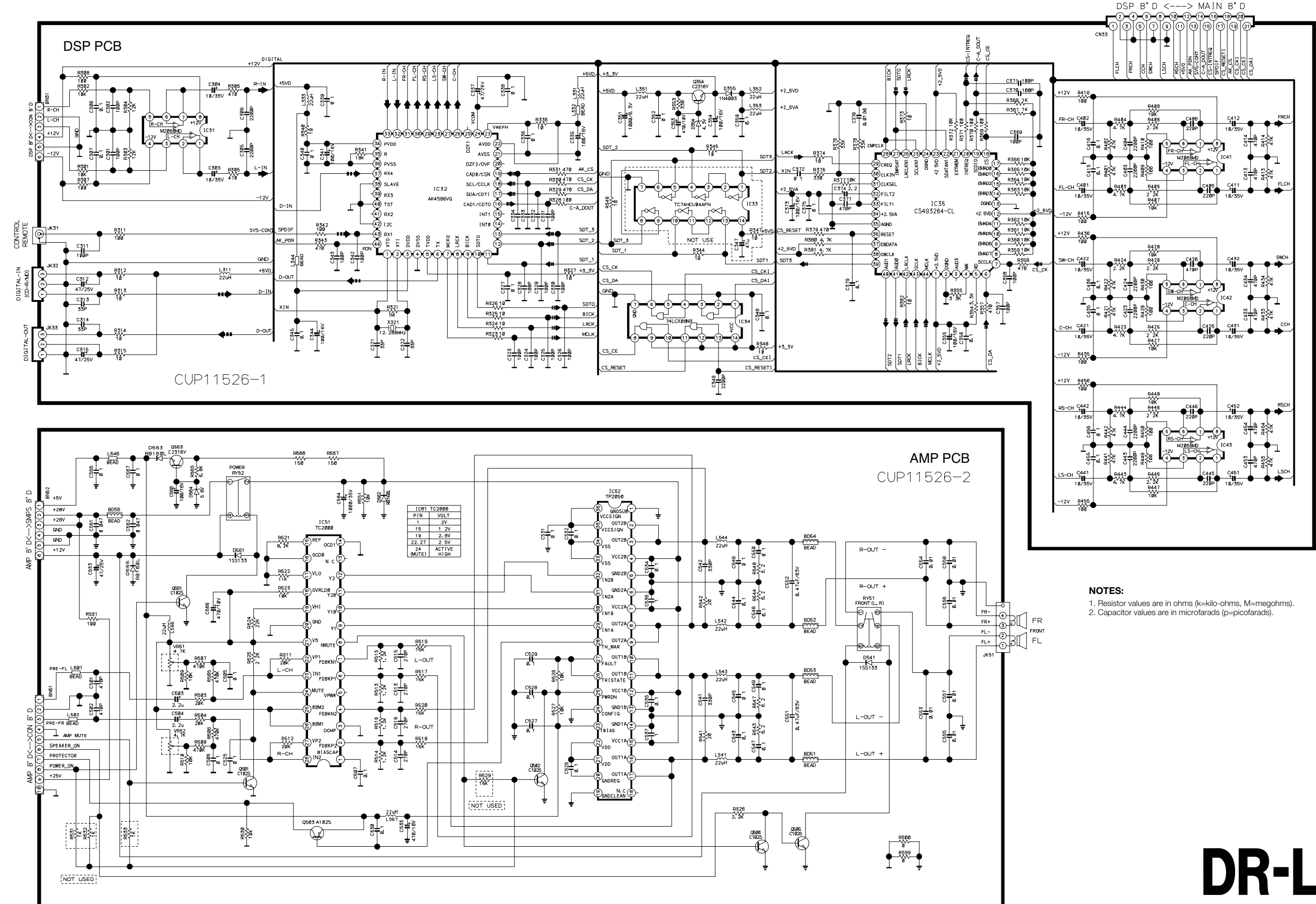
A

B

C

D

E



**NOTES:**  
1. Resistor values are in ohms (k=kilo-ohms, M=megohms).  
2. Capacitor values are in microfarads (p=picofarads).

# DR-L700

## DVD Receiver

1st Issue; November 2002

1

2

3

4

5

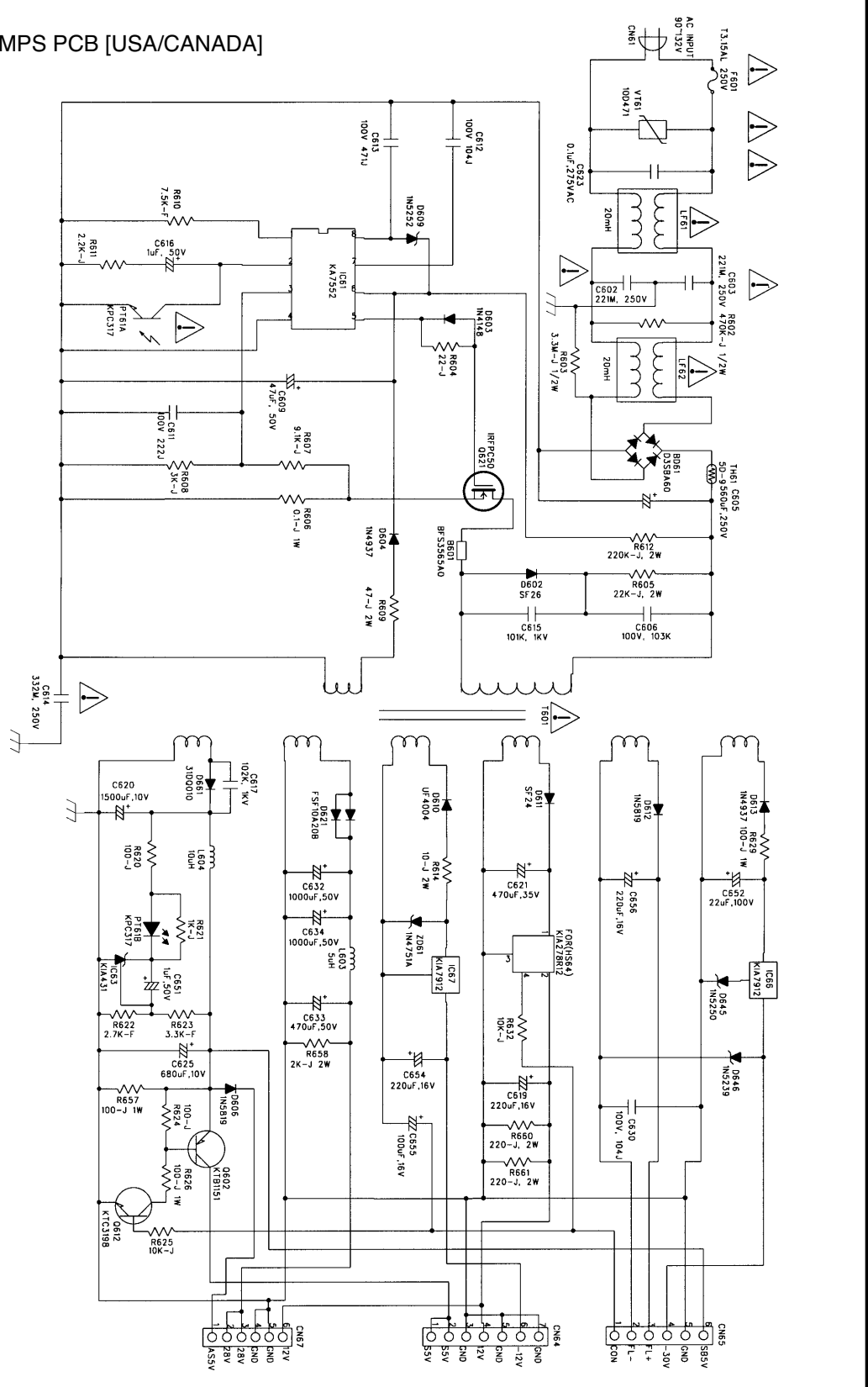
6

7

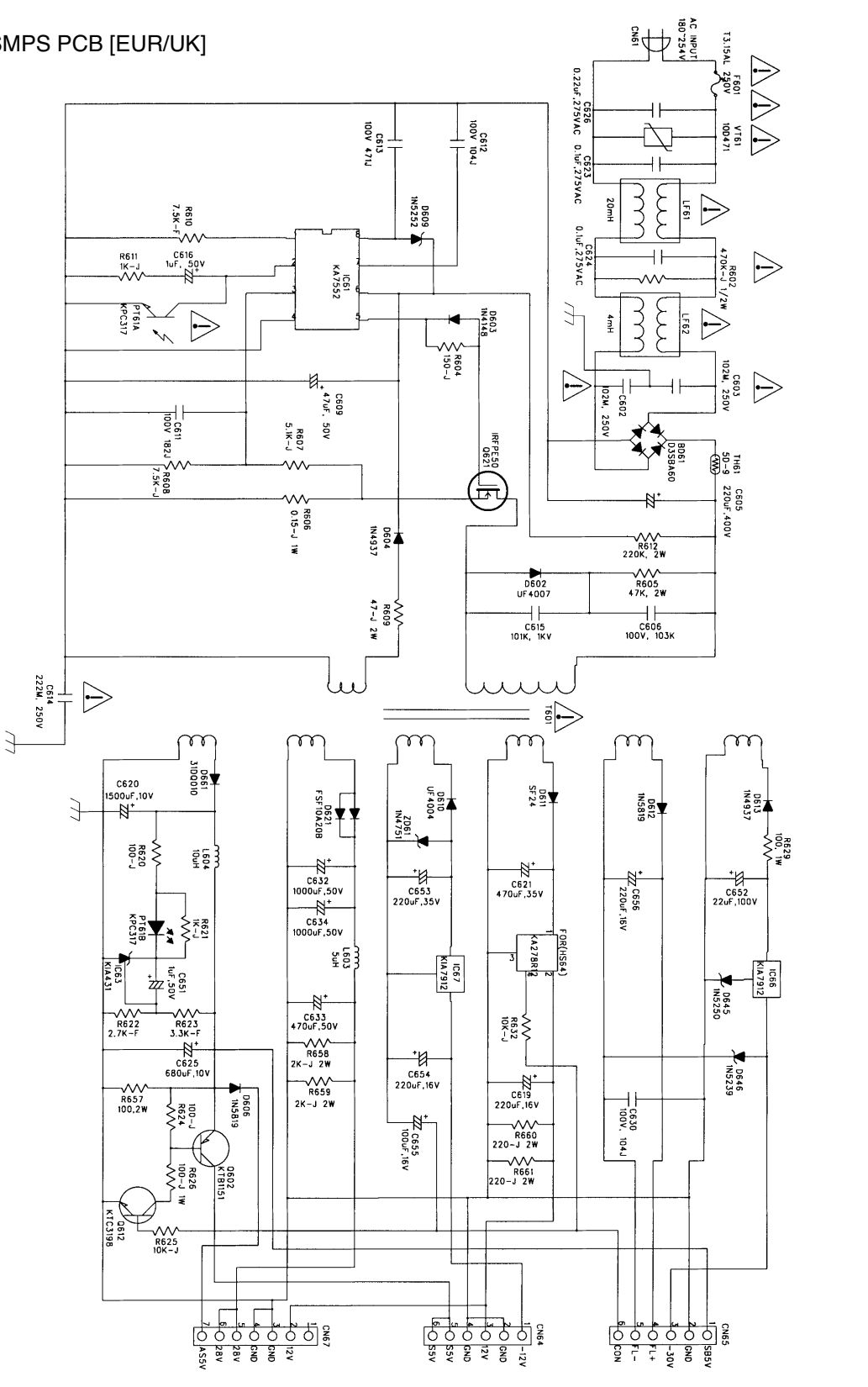
8

A  
B  
C  
D  
E

SMPS PCB [USA/CANADA]



SMPS PCB [EUR/UK]



**INSTRUCTIONS FOR SERVICE PERSONNEL**  
**BEFORE RETURNING APPLIANCE TO THE CUSTOMER, MAKE LEAKAGE-CURRENT OR RESISTANCE MEASUREMENTS TO DETERMINE THAT EXPOSED PARTS ARE ACCEPTABLY INSULATED FROM THE SUPPLY CIRCUIT.**

**NOTES:**  
 ⚠ Parts marked with this sign are safety critical components. They must always be replaced with identical components-refer to the appropriate parts list and ensure exact replacement.